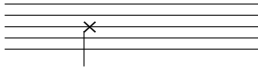


Performance Notes

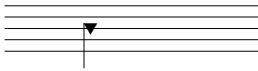
Symbols

Tongue Stop for Flute



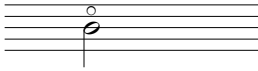
 Timbre Trill for Flute, Oboe

Slap for Saxophone



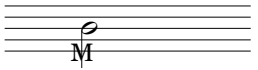
 Open/Close Mute Trill for Trombone

Harmonic for Bassoon

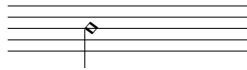


 Shake for Trumpet, Trombone

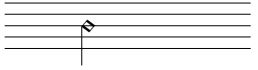
Multiphonic*



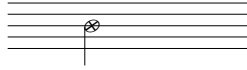
Mallet inside Piano**



Bow Behind the Bridge
for Contrabass



Bowed Piano***

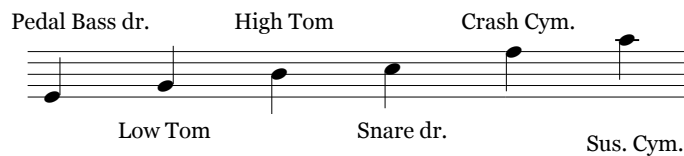


* Suggested multiphonic fingerings are provided in parts.

** Both this technique and the bowed piano need to be performed with the sustain pedal depressed.

*** To create a piano bow, string several lengths of fishing line between two end pieces. Use cello or contrabass rosin to increase friction between bow and strings. If any specified pitch cannot be reached on a given piano, another octave can be used.

Percussion Map



Exobiology

Krista Penney

Transposing Score

The musical score for Exobiology is a transposing score in 4/4 time with a tempo of 144. It features a full orchestra and a piano. The score is divided into five systems, with a repeat sign and first ending bracket labeled 'A' above the woodwinds in the final measure of each system.

- Flute:** Measures 1-4 are rests. Measures 5-7 are rests. Measures 8-9 feature a melodic line starting on G4, moving to A4, B4, and C5.
- Oboe:** Measures 1-4 are rests. Measures 5-7 are rests. Measures 8-9 feature a melodic line starting on B3, moving to A3, G3, and F3.
- Clarinet in Bb:** Measures 1-4 are rests. Measures 5-7 are rests. Measures 8-9 feature a melodic line starting on G3, moving to A3, B3, and C4.
- Alto Saxophone:** Measures 1-4 are rests. Measures 5-7 are rests. Measures 8-9 feature a melodic line starting on G3, moving to A3, B3, and C4.
- Bassoon:** Measures 1-4 are rests. Measures 5-7 are rests. Measures 8-9 feature a melodic line starting on G3, moving to A3, B3, and C4.
- Trumpet in Bb:** Measures 1-4 are rests. Measures 5-7 feature a melodic line starting on G3, moving to A3, B3, and C4, with a 'shake' marking above the notes. Measures 8-9 are rests.
- Trombone:** Measures 1-4 are rests. Measures 5-7 feature a melodic line starting on G3, moving to A3, B3, and C4, with a 'shake' marking above the notes. Measures 8-9 are rests.
- Percussion:** Measures 1-4 are rests. Measures 5-7 feature a rhythmic pattern: bass drum, snare, snare, snare. Measures 8-9 feature a hi-hat pattern.
- Piano:** Measures 1-4 are rests. Measures 5-7 feature a rhythmic pattern with 'pitch approx.' and 'L.V.' markings. Measures 8-9 feature 'precise pitches'. A piano instruction 'with mallet' is present at the beginning of the system.
- Contrabass:** Measures 1-4 are rests. Measures 5-7 feature a melodic line starting on G3, moving to A3, B3, and C4, with a 'pizz.' marking above the notes. Measures 8-9 are rests.

Dynamic markings include *ff* for the woodwinds and brass, and *mf* for the piano in the final measure. The piano part includes a low register instruction '8th L.V.' in the first measure.

6

Fl.

Ob.

Cl.

Alto Sax.

Bsn.

Tpt.

Tbn.

Perc.

Pno.

Cb.

f

f

f

on rim

sus cym

mf

sfz

ff

ff

f

pizz.

arco

8^{vb}

10

Fl.

Ob.

Cl.

Alto Sax.

Bsn.

Tpt.

Tbn.

Perc.

Pno.

Cb.

lo tom

mf *sfp*

f

ff

pizz.

8^{vb}

14

Fl.

Ob.

Cl.

Alto Sax.

Bsn.

Tpt.

Tbn.

Perc.

Pno.

Cb.

arco

Solo

f

Detailed description of the musical score: This page contains measures 14 through 17 of a musical score. The instruments are arranged in the following order from top to bottom: Flute (Fl.), Oboe (Ob.), Clarinet (Cl.), Alto Saxophone (Alto Sax.), Bassoon (Bsn.), Trumpet (Tpt.), Trombone (Tbn.), Percussion (Perc.), Piano (Pno.), and Cello (Cb.). The Alto Saxophone part has a 'Solo' marking in measure 17 and a dynamic of *f* in measure 16. The Piano part has a dynamic of *f* in measure 16. The Cello part is marked 'arco' in measure 14. The score includes various musical notations such as notes, rests, slurs, and dynamics.

B

18

Fl.

Ob.

Cl. *echo*
mp

Alto Sax.

Bsn.

Tpt. *mf*

Tbn. *mf*

Perc. *mf*

Pno. *mf*

Cb. *pizz.*
f

Detailed description: This page of a musical score covers measures 18 through 21. The score is for a large ensemble including Flute (Fl.), Oboe (Ob.), Clarinet (Cl.), Alto Saxophone (Alto Sax.), Bassoon (Bsn.), Trumpet (Tpt.), Trombone (Tbn.), Percussion (Perc.), Piano (Pno.), and Contrabass (Cb.).
- Measure 18: Flute, Oboe, Bassoon, and Clarinet are silent. Alto Saxophone plays a melodic line. Trumpet and Trombone play a rhythmic pattern. Percussion and Piano play a steady accompaniment. Contrabass plays a bass line.
- Measure 19: Similar to measure 18, with the Clarinet and Alto Saxophone continuing their parts.
- Measure 20: The Clarinet part begins with an 'echo' effect, indicated by a slur and the word 'echo' above the notes. The dynamic is marked 'mp'.
- Measure 21: The Clarinet part continues with the 'echo' effect. The Alto Saxophone and Contrabass parts also continue.
- Dynamics: 'mf' (mezzo-forte) is used for Tpt., Tbn., Perc., and Pno. 'mp' (mezzo-piano) is used for the Clarinet. 'f' (forte) is used for the Contrabass. 'pizz.' (pizzicato) is indicated for the Contrabass in measure 21.

22

Fl.

Ob.

Cl.

Alto Sax.

Bsn.

Tpt.

Tbn.

Perc.

Pno.

Cb.

Detailed description: This page of a musical score covers measures 22 through 25. The score is arranged in a system with ten staves. The top five staves are for Flute (Fl.), Oboe (Ob.), Clarinet (Cl.), Alto Saxophone (Alto Sax.), and Bassoon (Bsn.), all of which are silent in these measures. The next three staves are for Trumpet (Tpt.), Trombone (Tbn.), and Percussion (Perc.). The Piano (Pno.) part is written on a grand staff (treble and bass clefs). The Contrabass (Cb.) part is on the bottom staff. The music is in 4/4 time. The Alto Saxophone part features a melodic line with eighth and quarter notes, including accents and slurs. The Trumpet and Trombone parts play rhythmic patterns with eighth notes and rests. The Percussion part has a simple pattern of eighth notes. The Piano part provides harmonic support with chords and moving lines in both hands. The Contrabass part plays a steady bass line with some rhythmic variation.

C

26

Fl.

Ob.

Cl.

Alto Sax.

Bsn.

Tpt.

Tbn.

Perc.

Pno.

Cb.

f

f

f

8^{vb}

8^{vb}

Detailed description: This page of a musical score covers measures 26 through 29. The score is for a large ensemble including Flute (Fl.), Oboe (Ob.), Clarinet (Cl.), Alto Saxophone (Alto Sax.), Bassoon (Bsn.), Trumpet (Tpt.), Trombone (Tbn.), Percussion (Perc.), Piano (Pno.), and Contrabass (Cb.). Measures 26 and 27 are mostly rests for the woodwinds and strings, with the Alto Saxophone and Trombone playing. Measures 28 and 29 feature more active parts for the Alto Saxophone, Trumpet, Trombone, Percussion, and Piano. The Alto Saxophone and Trumpet parts include dynamic markings of *f* (forte). The Percussion part has a *f* marking. The Piano part has *f* markings and includes octave markings of 8^{vb} (8va below) in the bass clef. The Contrabass part has a *f* marking. The score is in common time (C) and begins with a measure number of 26.

molto rit.

30

Fl.

Ob.

Cl.

Alto Sax.

Bsn.

Tpt.

Tbn.

Perc.

Pno.

Cb.

f

8^{vb}

8^{vb}

8^{vb}

pitches approximate

35 A tempo

Fl. *f*

Ob.

Cl. *f*

Alto Sax. *f*

Bsn.

Tpt. *f*

Tbn. *fp* *fp*

Perc.

Pno. L.V. *8^{vb}*

Cb. arco *f*

D

39

Fl.

Ob.

Cl.

Alto Sax.

Bsn.

Tpt. *mute in*

Tbn. *Solo*

Perc.

Pno.

Cb.

mp

f

mf

echo

mp

mp

mp

Detailed description: This page of a musical score covers measures 39 through 42. It features a woodwind section with Flute, Oboe, Clarinet, and Alto Saxophone, a brass section with Trumpet and Trombone, a Percussion part, a Piano, and a Double Bass. The woodwinds and brass play sustained notes with accents and breath marks. The Trombone has a solo section starting in measure 40. The Piano and Double Bass provide harmonic support with chords and moving lines. Dynamics range from *f* to *mf*. Performance instructions include 'mute in' for the Trumpet and 'Solo' for the Trombone.

43

Fl.

Ob.

Cl.

Alto Sax.

Bsn.

Tpt. *mute out*

Tbn.

Perc.

Pno.

Cb.

Detailed description: This page of a musical score covers measures 43 through 46. The instrumentation includes Flute (Fl.), Oboe (Ob.), Clarinet (Cl.), Alto Saxophone (Alto Sax.), Bassoon (Bsn.), Trumpet (Tpt.), Trombone (Tbn.), Percussion (Perc.), Piano (Pno.), and Cello (Cb.). The Flute part is mostly silent, indicated by rests. The Oboe, Clarinet, and Piano parts feature melodic lines with slurs and accents. The Trombone part has a complex rhythmic pattern with slurs and accents. The Percussion part plays a steady pattern of eighth notes. The Trumpet part is silent, with the instruction 'mute out' above the staff. The Cello part plays a simple bass line with slurs and accents.

47

Fl.

Ob.

Cl.

Alto Sax.

Bsn.

Tpt.

Tbn.

Perc.

Pno.

Cb.

mf

mp *mf*

51

Fl.

Ob.

Cl.

Alto Sax.

Bsn.

Tpt.

Tbn.

Perc.

Pno.

Cb.

sfz

55

Fl.

Ob.

Cl.

Alto Sax.

Bsn.

Tpt.

Tbn.

Perc.

Pno.

Cb.

f

ff

F

59

Fl.

Ob.

Cl.

Alto Sax.

Bsn.

Tpt.

Tbn.

Perc.

Pno.

Cb.

p

p

3 3

p

63

Fl.

Ob.

Cl.

Alto Sax.

Bsn.

Tpt.

Tbn.

Perc.

Pno.

Cb.

cresc.

mp cresc.

p cresc.

cresc.

68

Fl.

Ob.

Cl.

Alto Sax.

Bsn.

Tpt.

Tbn.

Perc.

Pno.

Cb.

mf *cresc.*

f

f *p*

f *p*

p

8^{vb}

Detailed description: This page of a musical score contains measures 68 through 72. The instruments are Flute (Fl.), Oboe (Ob.), Clarinet (Cl.), Bassoon (Bsn.), Percussion (Perc.), Piano (Pno.), and Contrabass (Cb.). The Flute part begins with a melodic line in measure 68, marked with accents and a dynamic of *f* starting in measure 69. The Oboe part has a similar melodic line, marked with accents and dynamics of *f* and *p*. The Clarinet part has a melodic line marked with accents, *mf*, *cresc.*, and *f*. The Bassoon part has a melodic line marked with accents and dynamics of *f* and *p*. The Percussion part has a simple rhythmic pattern, marked with a dynamic of *p*. The Piano part has a melodic line in the right hand and a rhythmic line in the left hand, marked with accents and dynamics of *f* and *8^{vb}*. The Contrabass part is mostly silent, with a few notes in measure 72.

G

73

Ob.

Cl.

Alto Sax.

Bsn.

Perc.

p

cresc.

p

cresc.

p

78

Fl.

Ob.

Cl.

Alto Sax.

Bsn.

Perc.

mf

mf

mf

H

83

This musical score page contains measures 83 through 86. The instruments and their parts are:

- Fl.** (Flute): Measures 83-84 play a melodic line with accents and slurs. Measures 85-86 are silent.
- Ob.** (Oboe): Measures 83-84 play a melodic line with accents and slurs. Measures 85-86 are silent.
- Cl.** (Clarinet): Measures 83-84 are silent. Measures 85-86 play a melodic line with accents and slurs.
- Alto Sax.**: Measures 83-84 are silent. Measures 85-86 play a melodic line with accents and slurs.
- Bsn.** (Bassoon): Measures 83-84 play a melodic line with accents and slurs. Measures 85-86 are silent.
- Tpt.** (Trumpet): Measures 83-84 are silent. Measures 85-86 play a melodic line with accents and slurs.
- Tbn.** (Tuba): Measures 83-86 are silent.
- Perc.** (Percussion): Measures 83-84 are silent. Measures 85-86 play a rhythmic pattern.
- Pno.** (Piano): Measures 83-86 are silent.
- Cb.** (Cello/Double Bass): Measures 83-86 are silent.

The score includes various musical notations such as slurs, accents, and dynamic markings like *f* (forte).

molto rit.

87

Fl.

Ob.

Cl.

Alto Sax.

Bsn.

Tpt.

Tbn.

f

mute in

Perc.

Pno.

f

8^{ub}

8^{ub}

8^{ub}

pitches approximate

Cb.

I ♩ = 72
mysterious

92

Fl. *mp* *tr*

Ob.

Cl.

Alto Sax.

Bsn. *p*

Tpt.

Tbn. *pp*

Perc. *gentle* *scrape* *on the bell* *p* L.V.

Pno. *L.V.* *mp* *L.V.* *p* *L.V.* *L.V.*

Cb.

Detailed description of the musical score: The score is for page 21 of a piece, marked with a first ending bracket 'I' and a tempo of quarter note = 72. The mood is 'mysterious'. The music begins at measure 92. The Flute part starts with a mezzo-piano (*mp*) dynamic and a trill (*tr*) on a whole note. The Bassoon part has a piano (*p*) dynamic with a trill on a whole note. The Trombone part has a pianissimo (*pp*) dynamic with a trill on a whole note. The Percussion part includes 'gentle scrape' and 'on the bell' with a piano (*p*) dynamic. The Piano part features left-hand (L.V.) accompaniment with dynamics ranging from mezzo-piano (*mp*) to piano (*p*). The Cello part is mostly silent.

mysterious

98

Fl.

Bsn.

Tbn.

Perc.

Pno.

Cb.

on the bell

pp

p

insert bow

p L.V.

behind the bridge

p



103

Fl.

Bsn.

Tbn.

Perc.

p

3

pp

3

sfz

106

Fl. *sfz* 3 *sfz* *sfz*

Cl. *p*

Bsn. *mp*

Tbn.

Perc. 3 3 3

Cb. *mp*



110

Fl. *sfz* 3 *sfz*

Cl. *M*

Tbn.

Perc. *

113

Fl.

Ob.

Cl.

Alto Sax.

Bsn.

Tpt.

Tbn.

Perc.

Pno.

Cb.

p

mp

p

mp

niente

bowed

p

mp

tr

tr

5

3

M

M

M

M

M

M

M

M

M

M

118

Ob.

Bsn.

Perc.

Pno.

sfz

sfz

sfz

3



121

Ob.

Bsn.

Perc.

Pno.

Cb.

3

sfz

124

Fl. *mp*

Ob. *< sfz*

Cl. *mp < sfz*

Perc.

Pno.



K

127

Fl. *mp*

Ob. *tr*, *mp sfz*

Perc.

Pno.

Cb. *sfz*

131 *aggressive* 27

Fl. *mf*

Ob. *mf* *sfz* *aggressive*

Cl.

Alto Sax. *aggressive* *mf*

Bsn.

Tpt.

Tbn.

Perc. *mp*

Pno.

Cb.

134

Fl. *sfz*

Ob. *sfz* *f*³

Cl. *aggressive* *mf* *sfz* *f*

Alto Sax. *mf*

Bsn. *f*

Tpt.

Tbn. *mf*

Perc. *mf*

Pno.

Cb.

136

Fl.

Ob.

Cl.

Alto Sax.

Bsn.

Tpt.

Tbn.

Perc.

Pno.

Cb.

mp

Detailed description: This page of a musical score, numbered 136, features a woodwind and brass ensemble. The Flute part begins with a whole note G4 (with a flat) and a half rest. The Oboe part has a five-measure phrase, a three-measure phrase, and a trill. The Clarinet part has a three-measure phrase. The Alto Saxophone part has a quarter note G4, a quarter rest, and a half note G4. The Bassoon part has a three-measure phrase and a half note G3. The Trumpet part is silent. The Trombone part has a three-measure phrase and a half note G2. The Percussion part has a single quarter note G4 marked *f*. The Piano part has a whole note G2. The Contrabass part is silent. A dynamic marking of *mp* is at the bottom.

139

Fl.

Ob.

Cl.

Alto Sax.

Bsn.

Tpt.

Tbn.

Perc.

Pno.

Cb.

sfz

3

3

tr

tr

remove bow

141

Fl.

Ob.

Cl.

Alto Sax.

Bsn.

Tpt.

Tbn.

Perc.

Pno.

Cb.

mp

sfz

f < sfz

3

3

3

3

143

Fl.

Ob.

Cl.

Alto Sax.

Bsn.

Tpt.

Tbn.

Perc.

Pno.

Cb.

sfz

aggressive

cresc.

arco

3

3

3

5

+

+

145

Fl.

Ob.

Cl.

Alto Sax.

Bsn.

Tpt.

Tbn.

Perc.

Pno.

Cb.

ff

ff

ff

ff

f

f

f

Detailed description: This is a page of a musical score for a woodwind and percussion ensemble, covering measures 145, 146, and 147. The score is written for Flute (Fl.), Oboe (Ob.), Clarinet (Cl.), Alto Saxophone (Alto Sax.), Bassoon (Bsn.), Trumpet (Tpt.), Trombone (Tbn.), Percussion (Perc.), Piano (Pno.), and Contrabass (Cb.). The tempo is marked 'L' (Lento) with a quarter note equal to 144 beats per minute. The music is in a key with one flat (B-flat major or D minor) and a 4/4 time signature. Measures 145 and 146 feature a triplet of eighth notes in the Flute, Oboe, and Clarinet parts. The Flute, Oboe, Clarinet, and Bassoon parts are marked with a fortissimo (*ff*) dynamic. The Alto Saxophone part has a mezzo-forte (*f*) dynamic. The Percussion part has a forte (*f*) dynamic. The Piano and Contrabass parts are marked with a forte (*f*) dynamic. The Trumpet and Trombone parts are marked with a forte (*f*) dynamic. The score includes various musical notations such as slurs, accents, and dynamic markings.

148

Fl.

Ob.

Cl.

Alto Sax.

Bsn.

Tpt.

Tbn.

Perc.

Pno.

Cb.

Detailed description: This page of a musical score, numbered 148, features a woodwind section with five staves: Flute (Fl.), Oboe (Ob.), Clarinet (Cl.), Alto Saxophone (Alto Sax.), and Bassoon (Bsn.). The woodwinds play a melodic line with various articulations and dynamics. The Trumpet (Tpt.) and Trombone (Tbn.) staves are empty. The Percussion (Perc.) staff shows a rhythmic pattern with eighth and sixteenth notes. The Piano (Pno.) staves are also empty. The Bassoon (Cb.) staff at the bottom provides a bass line with a mix of eighth and quarter notes. The score is written in a key with one sharp (F#) and a common time signature.

M

152

Fl.

Ob.

Cl.

Alto Sax.

Bsn.

Tpt.

Tbn.

Perc.

Pno.

Cb.

f

f

f

f

f

f

mf *sfp*

on rim

with mallet

ff

mf

ff

f

8^{va}

pizz.

5/4

156

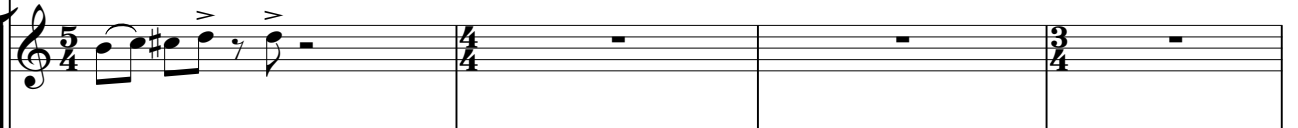
Fl. 


Ob. 

Cl. 

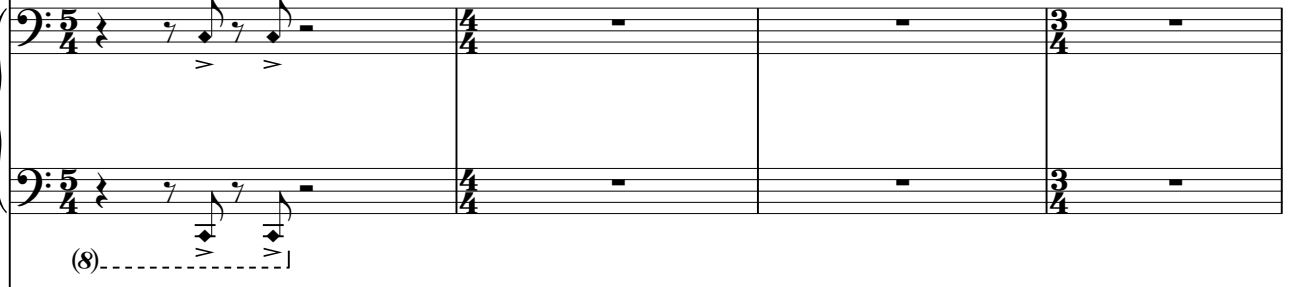
Alto Sax. 

Bsn. 

Tpt. 

Tbn. 

Perc. 

Pno. 

(8).....

Cb. 

arco

160

Fl.

Ob.

Cl.

Alto Sax.

Bsn.

Tpt.

Tbn.

Perc.

Pno.

Cb.

mf *sfp*

f

ff

pizz.

8^{vb}

164 38

Fl.

Ob.

Cl.

Alto Sax.

Bsn.

Tpt.

Tbn.

Perc.

Pno.

Cb.

Detailed description: This is a page of a musical score for a woodwind and percussion ensemble, covering measures 164 to 167. The score is written for Flute (Fl.), Oboe (Ob.), Clarinet (Cl.), Alto Saxophone (Alto Sax.), Bassoon (Bsn.), Trumpet (Tpt.), Trombone (Tbn.), Percussion (Perc.), Piano (Pno.), and Contrabass (Cb.). The Flute, Oboe, Clarinet, Bassoon, and Trumpet parts are active, featuring eighth-note patterns and various articulations like accents and slurs. The Alto Saxophone, Trombone, Piano, and Contrabass parts are mostly silent, indicated by rests. The Percussion part shows a rhythmic pattern with eighth notes and rests. The page number 164 is at the top left, and the rehearsal mark 38 is at the top right.

172

Fl.

Ob.

Cl.

Alto Sax.

Bsn.

Tpt.

Tbn.

Perc.

Pno.

Cb.

L.V.

8^{va}

Detailed description: This is a page of a musical score for a woodwind and brass ensemble, piano, and double bass. The page is numbered 40 in the top right corner and starts at measure 172. The score is arranged in a system with ten staves. The woodwind section includes Flute (Fl.), Oboe (Ob.), Clarinet (Cl.), and Alto Saxophone (Alto Sax.). The brass section includes Bassoon (Bsn.), Trumpet (Tpt.), and Trombone (Tbn.). The percussion (Perc.) is on a single staff. The piano (Pno.) is on a grand staff (treble and bass clefs). The double bass (Cb.) is on a single bass clef staff. The music features complex rhythmic patterns with many sixteenth and thirty-second notes, often beamed together. There are various articulations such as accents, slurs, and breath marks. The piano part includes a section marked 'L.V.' (Lento Vivace) and a dynamic marking of '8^{va}' (octave up) in the bass clef. The woodwinds and brass play similar melodic lines, often with slurs and accents. The percussion part has a few rhythmic figures. The double bass part has a steady bass line with some melodic movement.

175

Fl. *mp* *f*

Ob. *mp*

Cl. *mp*

Alto Sax. *mp* *f*

Bsn. *mp*

Tpt. *mp* *f*

Tbn. *mp*

Perc. *mf* *sfz*

Pno. *mf*

Cb. *mp*

Detailed description: This page of a musical score, numbered 41, contains measures 175 through 177. The score is arranged in a standard orchestral format with ten staves. The instruments and their parts are: Flute (Fl.), Oboe (Ob.), Clarinet (Cl.), Alto Saxophone (Alto Sax.), Bassoon (Bsn.), Trumpet (Tpt.), Trombone (Tbn.), Percussion (Perc.), Piano (Pno.), and Cello (Cb.). The key signature has one sharp (F#), and the time signature is 3/4. The Flute part begins with a fermata and a dynamic of *mp*, then moves to *f* in measure 176. The Oboe, Clarinet, Bassoon, Trumpet, and Trombone parts feature melodic lines with slurs and dynamics of *mp* and *f*. The Alto Saxophone part has a dynamic of *mp* in measure 175 and *f* in measure 176. The Percussion part has rests in measures 175 and 176, followed by notes in measure 177 with dynamics of *mf* and *sfz*. The Piano part has rests in measures 175 and 176, followed by notes in measure 177 with a dynamic of *mf*. The Cello part has a melodic line with a dynamic of *mp* throughout. The page ends with a double bar line.